



Manestream Ltd Environmental Newsletter

Making the workplace and the world more green



MANESTREAM LTD

Volume 1, Issue 6

Fri. Nov 27th, 2009

How much energy is used on your natural Christmas tree?

If you don't already have a Christmas tree and are contemplating getting a fresh one, you may not realize just how big your tree's carbon footprint actually is. Read on and you may be surprised:

- **Livestock is used to produce manure to grow the tree (energy used and methane produced).**
- **The manure is transported to tree farms (energy used for transport).**
- **Water from reservoirs is used to feed your tree (water abstraction and supply uses energy).**
- **Your tree is cut down (power tools use energy).**
- **Your tree is wrapped in plastic netting to hold it tight (energy is used to manufacture the net from oil, and to get oil in the first place).**
- **Your tree will be transported to a warehouse before shipping to your place of purchase (energy for transport and for storage).**
- **You need to go and buy the tree (energy for transport).**
- **You will, of course, water the tree to keep it looking fresh and nice for Christmas (water abstraction and supply uses energy).**
- **Let's assume that after Christmas your tree will be taken somewhere for recycling (energy for transport).**
- **Machinery turns your tree into wood chips (energy used).**
- **The wood chips are placed in plastic bags (energy is used to manufacture the bags from oil, and to get oil in the first place).**
- **The wood chips are transported to a garden centre for sale (energy for transport).**
- **Someone will buy the wood chips and take them home (energy for transport).**

And just think this happens every year. So the cost to your pocket compared to a nice realistic alternative tree over the next five to ten years is more expensive, too. And, don't worry, I won't complain about the nice fairy lights that illuminate your festive tree. That would be pure humbug.....

In this Month's Issue:

How much energy is used on your Christmas tree? 1

Meet Samantha Andrady 2

Manestream Ltd's Environmental Policy 2

October 2009 Carbon Footprint Statistics 3

Waste Management 4

Vehicle Management 4

Energy Management 4

Environmental Objectives

- To reduce by >10% the fuel usage of the company's fleet, and hence emissions, within 12 months.
- To reduce by > 10% the energy used at Manestream Ltd's offices within 12 months.
- To reduce Manestream Ltd's carbon footprint by > 10% overall within 12 months.

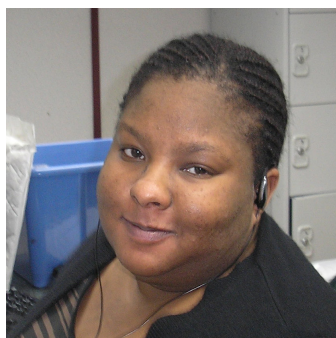
For those interested in finding out more about climate change, check out the Met Office website:

<http://www.metoffice.gov.uk/climatechange/guide/>



Meet Samantha Andradý

Welcome to the new member of our internal lab team.



Where are you from?

I am from London and I have lived in North West London all my life.

How long have you been at Manestream?

I have been at Manestream about 3 months.

What is your job title?

I am a trainee laboratory technician.

What do you most enjoy about your job?

I enjoy the fact that there is always something to do. I like to be busy or I get bored.

What is a typical working day like at Manestream for you?

I look in any site packs which have been brought down or sent into the lab. After I finish, that I usually look at old samples to see if I am able to find what the other analysts have found when they looked at them. Right now I am studying for my P401 exams on the 10th December, so wish me luck!

What are your views on global warming?

It is an important issue, because it is causing the temperature to rise and it will cause extreme weather (tropical storms and many areas will be flooded). Another reason is because there is a lot of CO₂ emissions, the air is becoming polluted, and if it carries on this way, tropical and rare diseases will become very common!

Do you recycle at home?

Yes, we have special recycling bins outside our home and the refuse collectors won't take the rubbish if it's not properly divided. I would like to be more eco friendly and bike ride to work, but I don't have a bike and even if I did it wouldn't help as I can't ride one.

What do you enjoy doing in your free time?

In my spare time I enjoy hanging out with my friends/family and reading.

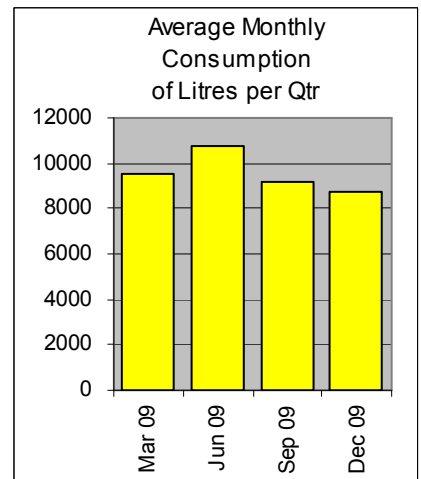
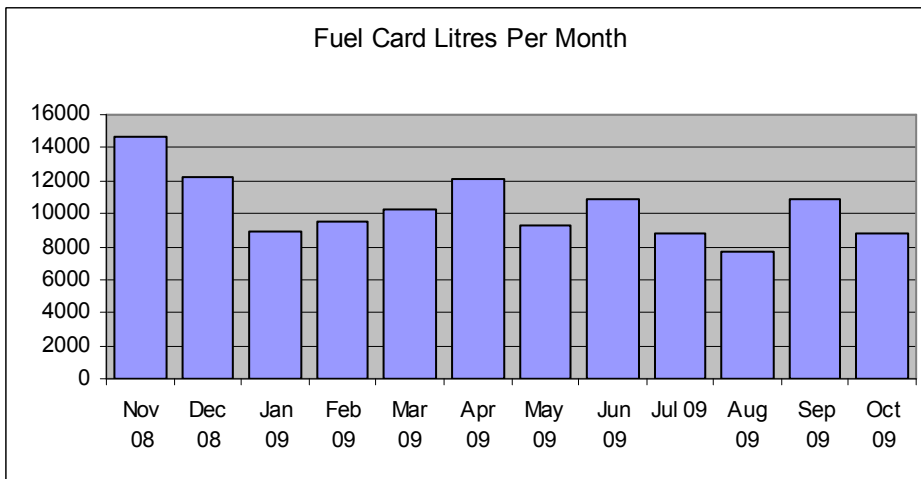
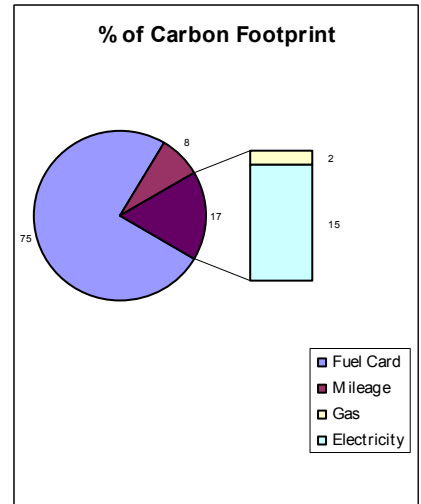
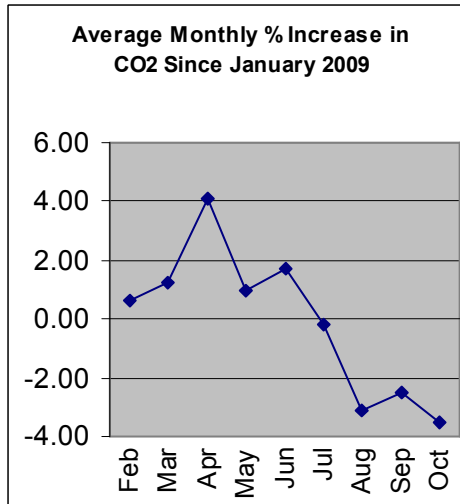
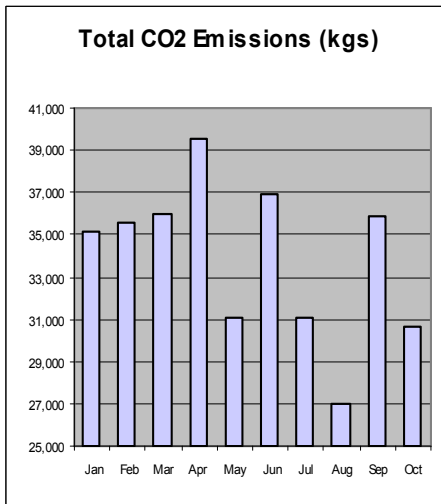
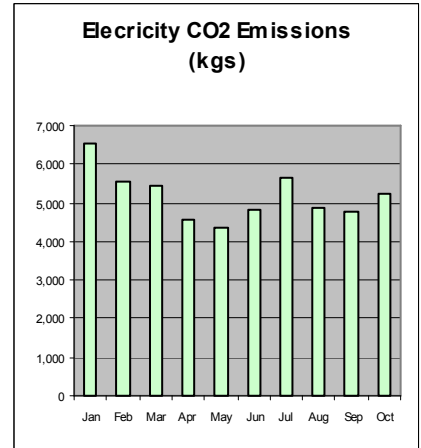
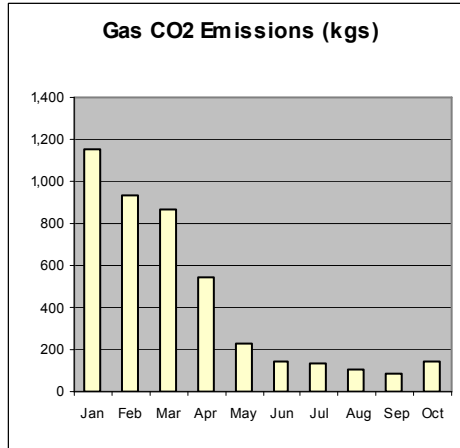
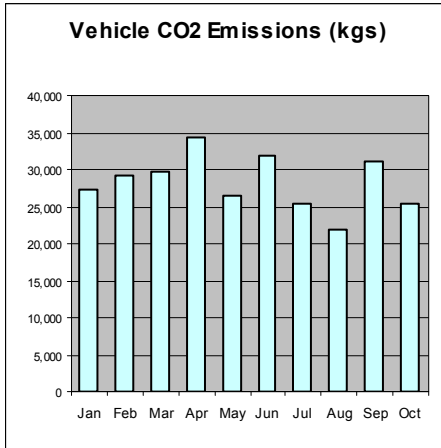
Manestream Ltd's Environmental Policy

Manestream Ltd recognises its responsibilities for the environmental impacts of its day to day activities and is committed to minimising the potentially detrimental effects of these activities. This policy gives a platform to integrate environmental factors into our day to day business decisions.

- Continual environmental improvement by allowing for the adoption of innovation and new ideas.
- Monitoring environmental performance by setting objectives and targets.
- Regulatory compliance by operating within all legal requirements and codes of practice.
- Management of environmental impact is effected by prevention of pollution, controlling reduction of emissions, conserving resources, increasing transport efficiency and minimising waste. We believe that this can only be achieved by our relationships and partnerships by:
- Empowering our employees by training them to manage environmental issues as an integral part of their jobs
- Influencing our supply chain partners to improve environmental performance.
- Understanding communities and our customers concerns on environmental issues and being responsive to these concerns.
- Reporting and communicating our environmental performance openly to all Manestream Ltd stakeholders and public.

In summary, the principal elements of the Environmental Policy are to establish and maintain processes capable of achieving continual improvement towards reducing the environmental impact of Manestream Ltd operations, and meeting the environmental objectives, and to establish and maintain the EMS satisfying the requirements of BS EN ISO 14001:2004 forming a framework for the setting of environmental objectives.

October 2009 Carbon Footprint Statistics



Christmas Idea
Al Gore's video
"An Inconvenient Truth"

Christmas Idea
"Six Degrees,
Our future on a hotter planet"
By Mark Lynas

Waste Management Program

The number of black dustbin bags taken for recycling between Mon, Nov 2nd and Fri, Nov 27th was (25 weeks cumulative in brackets): Paper 14 (200), aluminium cans 2 (11), and plastic cups and bottles 3 (17). We have also had the 1100 litre red recycle bin (cardboard waste) emptied twice (4), too.

Vehicle Management Program

At last month's Senior Management Team meeting the management discussed at length the current vehicle management situation and various components of the vehicle management program. In line with previous objectives, creation of an environmental team was agreed on by expanding the H&S committee to include administrative areas of environmental control. This will be discussed in detail at the forthcoming H&S and Environmental Committee meeting this coming Thursday, December 3rd.

The Senior Management Team also tasked the Environmental Manager with the responsibility of producing proposals for how we can improve our reduction of vehicle use and CO2 emissions. This will be reported on following the Annual Quality Meeting to be held at our Enfield Offices on Wednesday, December 9th.

Energy Management Program

Over the last few months we have been in contact with both Hilton Heating & Cooling and Eagle Systems regarding our energy systems at our Enfield office.

Following a visit from Hilton Heating & Cooling, we were able to improve the heat generated by the radiators on the boiler system and reduce the amount of energy being used by the heating and cooling system.

We have also tasked Eagle Systems to provide a proposal for the removal of the R22 refrigerant from the air conditioning system. They have promised to get back to us by the end of December with this.

We would like to wish all our staff, customers and suppliers a Merry Christmas and a prosperous and sustainable New Year.

Contact Details

Paul J White, Environmental Manager
Unit 1, Great Cambridge Ind. Est. Lincoln Rd,
Enfield, Middlesex. EN1 1SH
Telephone: 020 8805 8282
Direct Dial: 020 8344 1905
Mobile: 075 1599 8804
E-mail: paul.white@manestream.co.uk

Coming next month

The next newsletter will be emailed to you on Thursday, December 24th and will include the following:

- Nov 2009 Carbon Footprint Statistics
- Monthly Employee Pen Picture
- Environmental Article
- Updates on our environmental initiatives

Making the workplace and the world more green